



## Horse Riding/ Equestrian Center for sale in Portugal

Reference arrv271  
 Purpose Sale  
 Location Setúbal  
 Bedrooms  
 Bathrooms  
 Built Area 10000 sqm  
 Plot Area 80000 sqm  
 Price On Request



## DESCRIPTION

The Riding Center we present for sale is integrated in a farm with about 80.000 sqm, endowed with Iberian referenced equestrian facilities, a horse riding school and infrastructures dedicated to the organization of events. The sale of these infrastructures may be held jointly or separately with the sale of a great residential mansion that, with an area of 1,655 sqm, is the outcome of a deep and dedicated work of restoration carried out on a Dominican Convent built by Portuguese monarchy in the year 1434. Click here to access all information concerning this residential mansion with conditions to be adapted, for example, to a hotel or inn.

Since 2000, several national and international equestrian competitions have been held in this equestrian riding center, having staged a major expertise European championship in July 2008.

Of the existent equestrian infrastructures stands out: Boxes and bails for 30 horses; Harness sheds and haylofts; 2 Covered rings; 1 Heating field with 50mts x 50mts; 1 Teaching field with 20mts x 60mts; 1 Obstacles field of with 50 mts x 100mts; 1 Lawned obstacles field with 50 mts x 100mts; 1 Electric guide; 3 Platforms for installing removable boxes for competitions with capacity to accommodate 270 horses; 3 Car parks for 80 automobiles, 40 trucks and 50 trailers.

Of the existent facilities dedicated to the organization of events stands out an air conditioned recreation hall with the capacity for 350 guests, a fully equipped kitchen, a chapel with an exterior patio, beautiful surrounding gardens with lawn and flowers and parking with 350 spaces. With all this existent facilities the property is prepared to respond with distinction to the organization of all types of events. From the necessary catering to support great equestrian events, to the realization and organization of weddings, or simple renting of spaces, the farm presents a fantastic responding

capacity.

## LOCATION

---

Lofty to Arrabida's mountain (Serra da Arrábida), in the path to Sesimbra, but still belonging to Setúbal's district and just 25 kms from Lisbon, is located the manorial village of Azeitão.

Between the XV century and the beginning of the XIX century, Azeitão was widely sought by the Portuguese nobility for leisure and recreation, attracted by abundant hunting and fishing and by the interesting wine-producing potential of the region. Confirming it are still some farms, once nobles' property, which today are being adopted by the upper class who has invested in, establishing extraordinary houses for first and second housing, consolidating for Azeitão the status of "Sintra of the South Edge".

From the Middle Ages, Renaissance and Baroque exist some traces worth of notices, as manorial palaces, chapels and convents, in which this property integrates itself and of which are also example the Arrabida's Convent, the Bacalhôa's Palace, Bacalhôa's Farm or Torres' Farm.

The Arrábida's Convent is the culture card of the region. It is fully integrated in the landscape of the Park where the magnificent cliffs fall into the sea forming small and solitary beaches, where Portinho da Arrábida and the Beach of Figueirinha emerge as major attractions for summer afternoons.

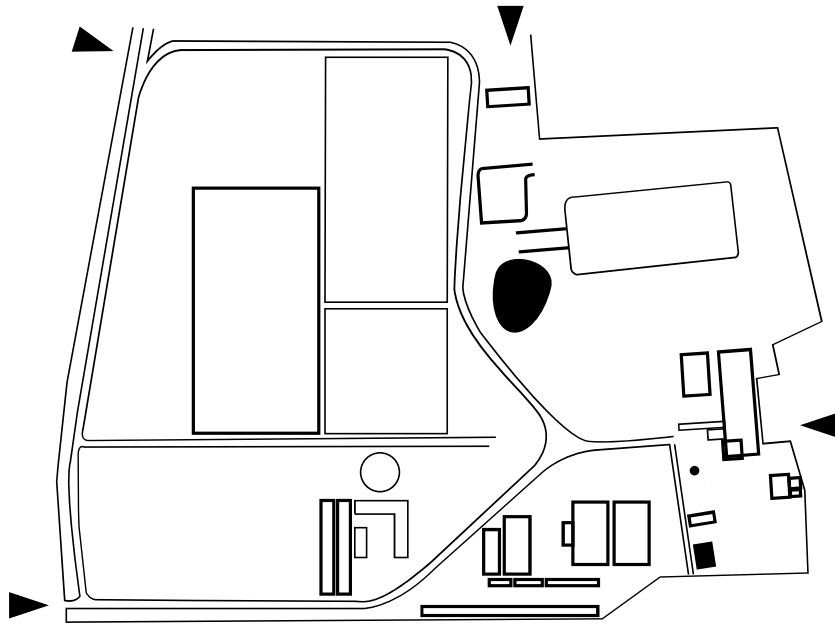
The manufacture of the cheese of Azeitão, regional sweets and the production of table wines, achieved recognition across borders and are today symbols of the region. Two of the Portuguese biggest wineries are of this region: Bacalhôa and José Maria da Fonseca.

The property for sale is located in Azeitão, close to the peninsula of Tróia, 15 kms from the fishermen's town of Sesimbra and about 25 kms from Lisbon.

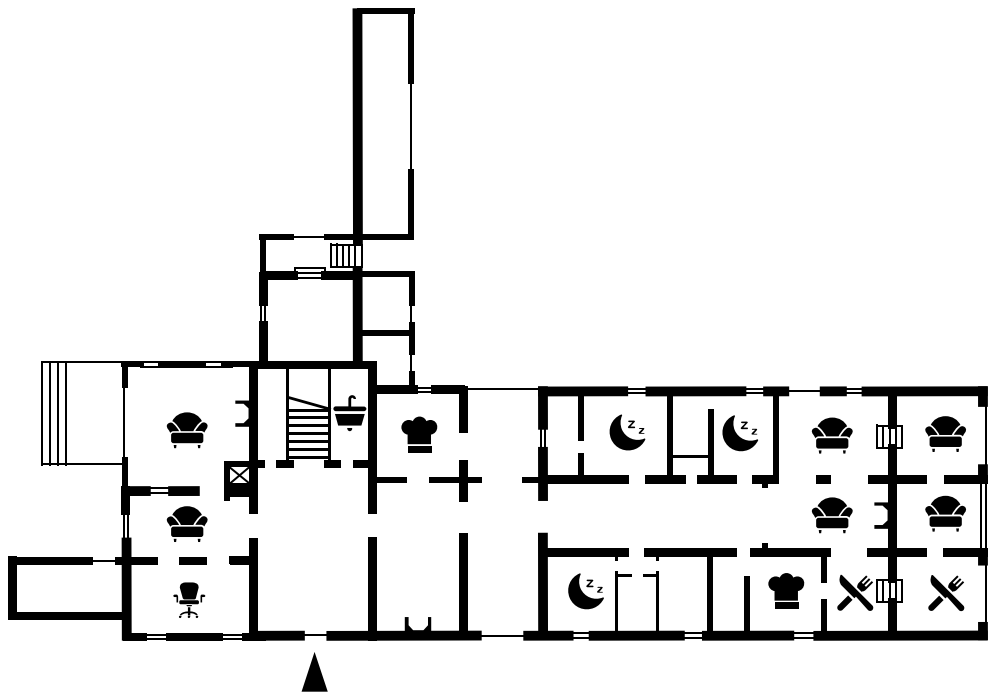
## FLOOR PLANS

---

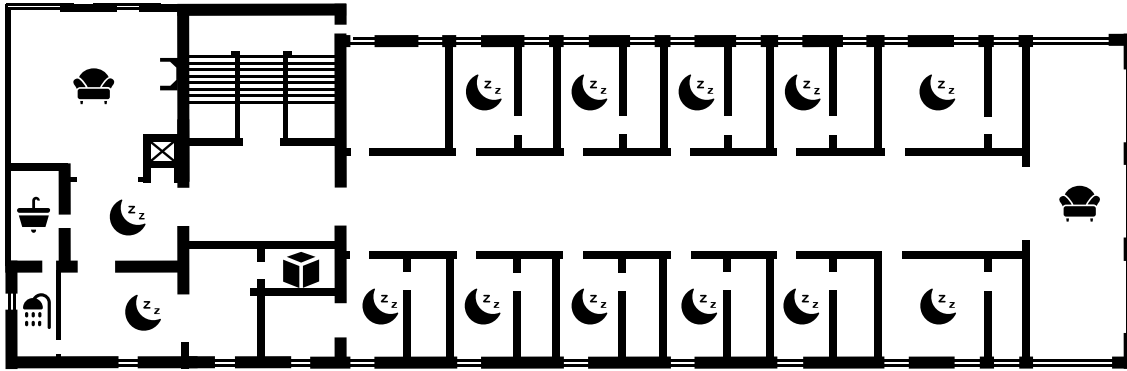
### Plot



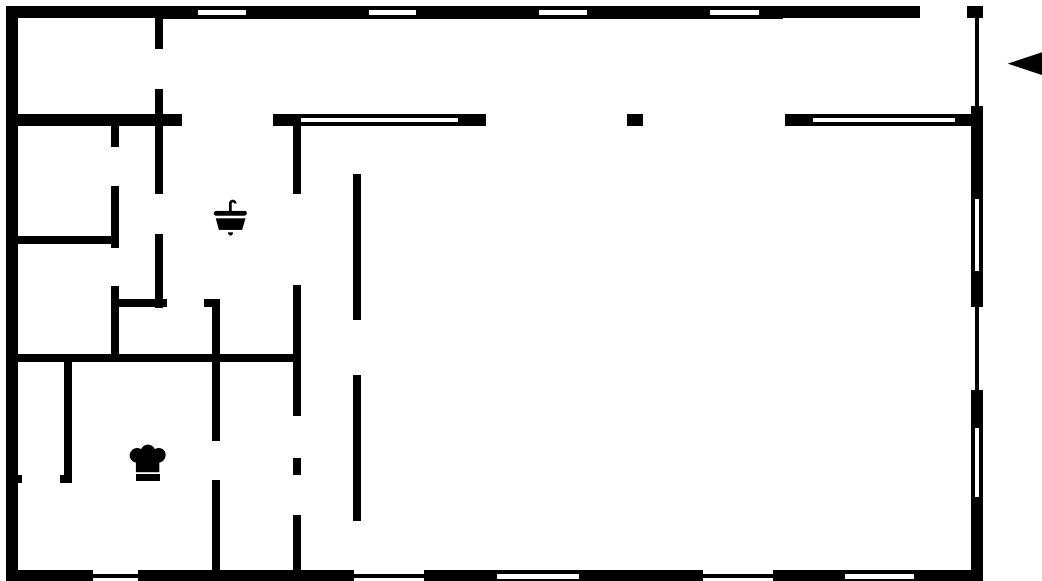
Ground Floor



First Floor



### Events Area



## PHOTOS

---

