



## Mansion - Property for sale in Azeitão, Serra da Arrábida

Reference arrv181  
Purpose Sale  
Location Setúbal  
Bedrooms 15  
Bathrooms 16  
Built Area 1655 sqm  
Plot Area 80000 sqm  
Price On Request



## DESCRIPTION

---

The property we present for sale is the outcome of a deep and dedicated work of restoration carried out on a Dominican Convent built by Portuguese monarchy in the year 1434.

With a constructed area of about 1,655 sqm, the main house presents herself today as a fabulous two floors family house, with truly unique characteristics and with an inner architecture "without excess or imperfection", which resulted in a fantastic residential mansion, with stained glass windows, antique ceramic tiles and motives of high historical and patrimonial value.

The ground floor, with about 835 sqm, is composed by spacious and noble social galleries, charming drawing rooms, one office, two suites, one double suite, two bathrooms, and two kitchens. The main staircase leads to the first floor where an impressive and surprising 125 sqm gallery, served by two beautiful stained glass windows, distributes a master suite with private lounge and 11 suites supported by a breakfast-room and a panoramic living-room. This first floor has a total area of about 820 sqm.

Conjointly to the main house remains a beautiful chapel and several support facilities. Besides the main house there is a small house, suitable for support house, caretaker's house, or for periodic renting.

Given the unique characteristics of this property, there are several exploration possibilities. Being able to maintain itself as a magnificent dwelling, the property has all the conditions to be adapted, for example, to an Hotel of "Charme".

With the possibility of being sold together or independently of the main house, we also present for sale a property with about 80,000 sqm, endowed with a broad horse riding centre and facilities dedicated to the organization of events. This property adjoins with the property described previously, belonging to the same owners.

## LOCATION

---

Lofty to Arrabida's mountain (Serra da Arrábida), in the path to Sesimbra, but still belonging to Setúbal's district, is located the manorial village of Azeitão.

Between the XV century and the beginning of the XIX century, Azeitão was widely sought by the Portuguese nobility for leisure and recreation, attracted by abundant hunting and fishing and by the interesting wine-producing potential of the region. Confirming it are still some farms, once nobles' property, which today are being adopted by the upper class who has invested in, establishing extraordinary houses for first and second housing, consolidating for Azeitão the status of "Sintra of the South Edge".

From the Middle Ages, Renaissance and Baroque exist some traces worth of notices, as manorial palaces, chapels and convents, in which this property integrates itself and of which are also example the Arrabida's Convent, the Bacalhôa's Palace, Bacalhôa's Farm or Torres' Farm.

The Arrábida's Convent is the culture card of the region. It is fully integrated in the landscape of the Park where the magnificent cliffs fall into the sea forming small and solitary beaches, where Portinho da Arrábida and the Beach of Figueirinha emerge as major attractions for summer afternoons.

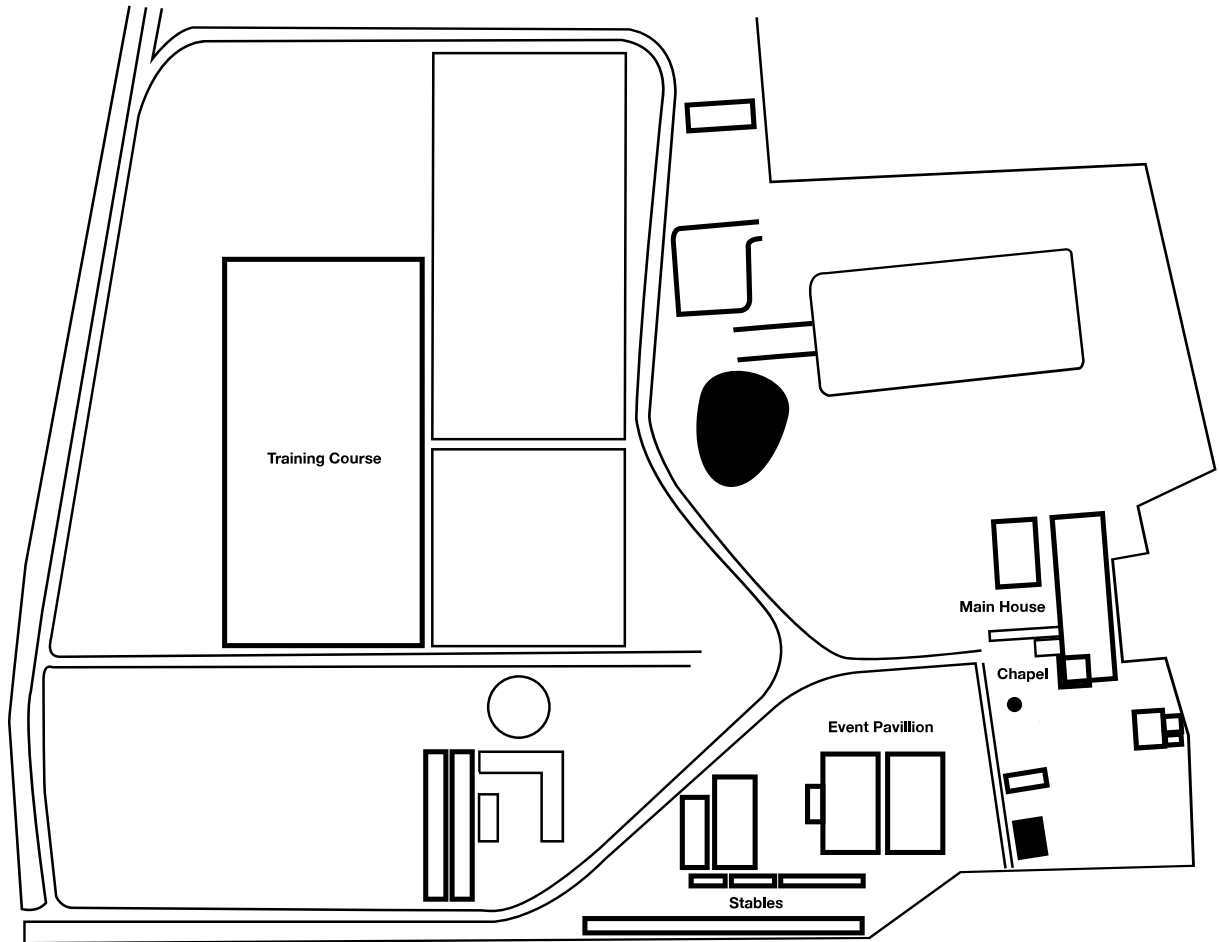
The manufacture of the cheese of Azeitão, regional sweets and the production of table wines, achieved recognition across borders and are today symbols of the region. Two of the portuguese biggest wineries are of this region: Bacalhôa and José Maria da Fonseca.

The property for sale is located in Azeitão, close to the peninsula of Tróia, 15 kms from the fishermen's town of Sesimbra and about 25 kms from Lisbon.

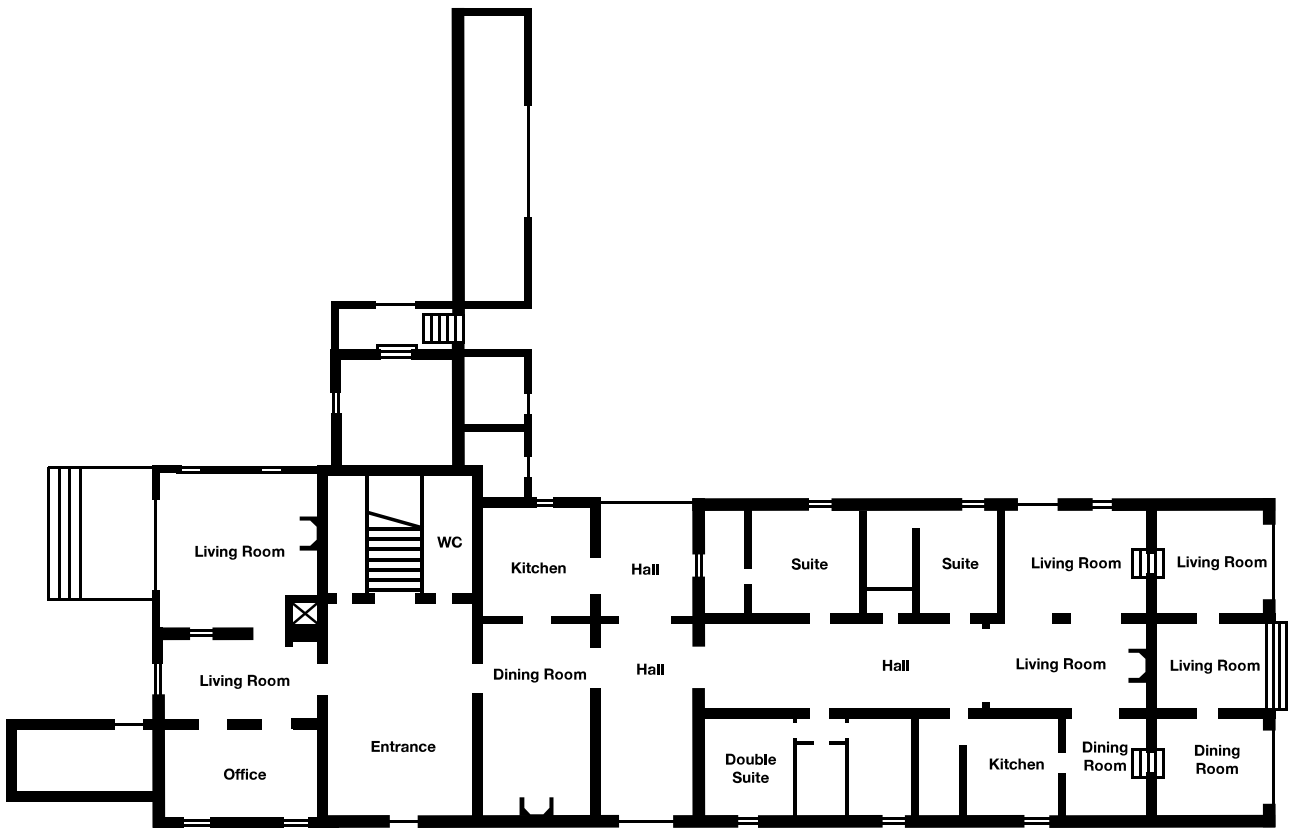
## FLOOR PLANS

---

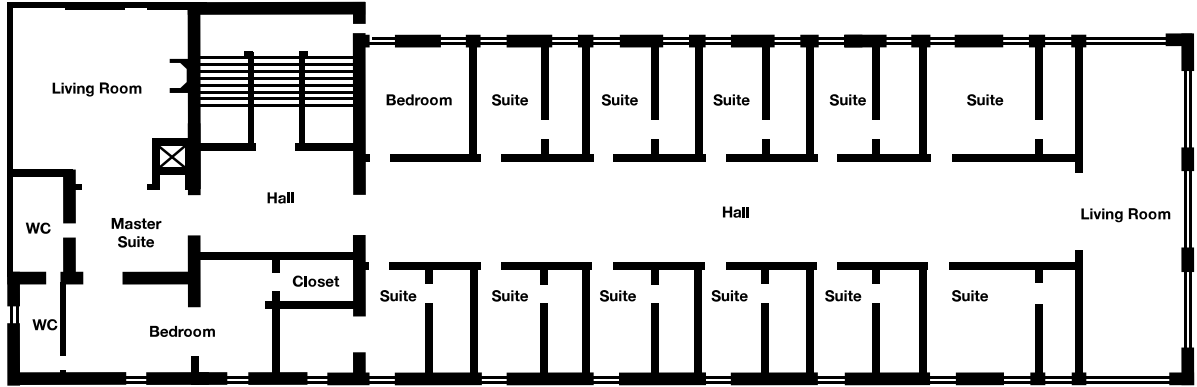
### Plot



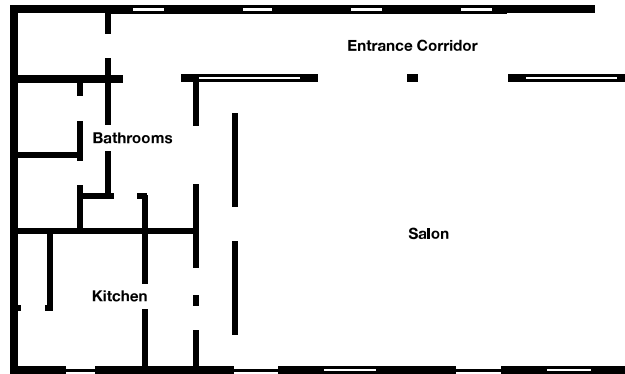
### Ground Floor



**First Floor**



## Events Area





## PHOTOS

---

